

LABSTOOLS

FIRM // FLEX SERIES

The **FIRM FLEX LAB STOOL** is a cost-effective way to maximize the usable workspace and increase overall adaptability of a room. Made with high-density polyurethane, our stools are tough enough to withstand the broad spectrum of working conditions that may be present in any lab type. Firm Flex stools are height adjustable, available with a standard-style round or tractor-style molded seat, fixed or mobile base and in a variety of finishes.



Puncture-Proof Polyurethane Seat

Adjustable Height from 23-33"

Nylon, Chrome or Aluminum Base Style

Fixed or Mobile - 5 Leg Base

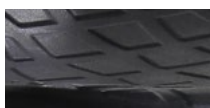


FLEXSTOOLS

FEATURES

- + **Height Adjustable** [from 23 to 33"]
- + **Fixed or Mobile Base Style** [nylon, chrome or aluminum]
- + **5-Leg Standard Base** [glides or 2.5" casters]
- + **Durable Seat Material** [tear resistant Polyurethane]
- + **Heavy Duty Welding** [holds up to 450lb.]

SEAT SURFACES



POLYURETHANE COLORS
BLACK

BASE STYLES

MOBILE



NYLON 25"W



CHROME 26"W



ALUMINUM 27"W

FIXED



NYLON 25"W



CHROME 26"W



ALUMINUM 27"W

DIMENSIONS

ITEM #	SHAPE	HEIGHT RANGE	SEAT	BASE	BASE STYLE
LS-LNT-US	Round	23 to 33"H	19"W X 14"D	25"W	Nylon
LS-LCT-US	Round	23 to 33"H	19"W X 14"D	26"W	Chrome
LS-LAT-US	Round	23 to 33"H	19"W X 14"D	27"W	Aluminum
LS-LNT-UT	Tractor	23 to 33"H	19"W X 14"D	25"W	Nylon
LS-LCT-UT	Tractor	23 to 33"H	19"W X 14"D	26"W	Chrome
LS-LAT-UT	Tractor	23 to 33"H	19"W X 14"D	27"W	Aluminum