

L A B S C A P E

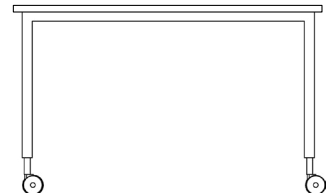
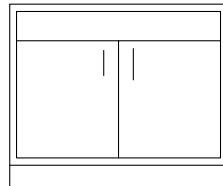
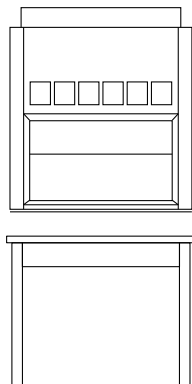
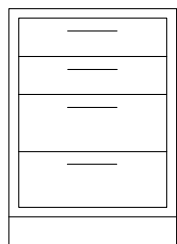
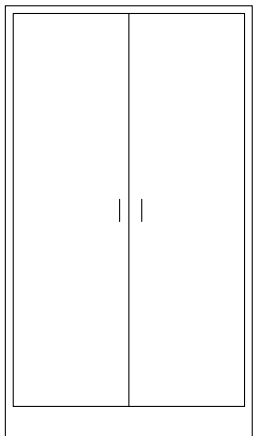
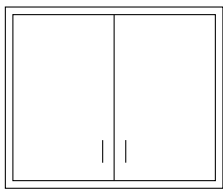


/// FIXTURES // SEATING // STORAGE

/// MODERN LABORATORY /// CASEWORK // TABLES // FUME HOODS

QUICKSHIP

QUICKSHIP



/// LABORATORY PRODUCTS FOR ALL MARKETS, ANY SIZE ROOM, AND EVERY BUDGET.

BIOLOGY / CHEMISTRY / ROBOTICS / S.T.E.A.M.

Science and technology are advancing at an alarming pace. As a result, increasing demands are being placed on educators and facilities to better prepare students for the future. For over 50 years, we've been planning and providing total workspace solutions for educational laboratory facilities across the country. At **Labscape** we have the experience, knowledge, and flexible product offerings to transform any size space into a modern, inspirational learning environment.

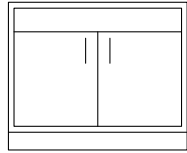
From furniture to fume hoods, **Labscape** offers the most comprehensive selection of high-quality laboratory furniture and equipment available in the industry. Our product breadth includes adaptable workstations, modular casework, countertops, high-efficiency fume hoods, fixtures, ergonomic seating, and much more. **Labscape** also offers **contract pricing**, which translates as, "**big savings**" for you. All of our products and services can be purchased through our affiliate purchasing cooperative, allowing us to skip the extensive bid process and you to avoid having to pay additional third-party fees.

The **Labscape** team is committed to seeing your project through to successful completion. We offer an unparalleled level of client support from phase one of planning to delivery and complete installation. When you partner with **Labscape**, we can ensure that your laboratory is built to specification, completed on time, and within budget. **Labscape** is your one-stop-lab-shop.

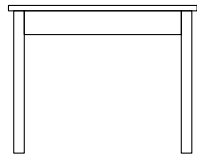
PHYSICS / GENERAL SCIENCE / HOME ECONOMICS

CONTENTS //

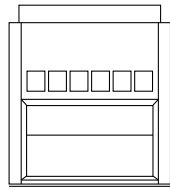
CASEWORK	04
BASE CABINETS	08
WALL CASES	11
TALL STORAGE	13
LAB TABLES	14
FLEX SYSTEMS	17
MOBILE CARTS	18
FUME HOODS	24
AIR FOIL SERIES	26
ENCLOSURE PANELS	30
LAB SEATING	32
FIXTURES	34



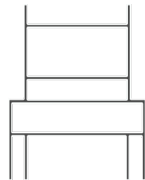
04



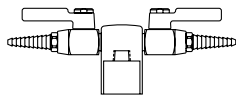
14



24



32



34



CASEWORK //

CABINET CONSTRUCTION

METAL

WOOD

PLASTIC LAMINATE

CABINET STYLES

BASE CABINETS

WALL CASES

TALL STORAGE



METAL CABINETS

Made with heavy-duty steel, metal lab cabinets are durable, fire-resistant and low maintenance. For frequent-use laboratories, metal cabinets have the strength to support heavy loads and the resilience to withstand exposure to most harsh chemicals.

FEATURES

- + 16" or 18" gauge steel construction
- + Powder coated steel finish
- + Corrosion + rust resistance
- + Available in 16+ colors

/// LABORATORY PRODUCTS FOR ALL MARKETS,
ANY SIZE ROOM, AND EVERY BUDGET.



WOOD CABINETS

Because of its durable nature, wood has remained the traditional cabinet choice of educational science facilities for decades. Wood casework is built to last, which makes it the ideal and economical choice for high-use, educational science lab settings.

FEATURES

- + Solid wood construction
- + Chemical resistant, UV finish
- + Warm aesthetic
- + Available in 5+ finishes



PLASTIC LAMINATE CABINETS

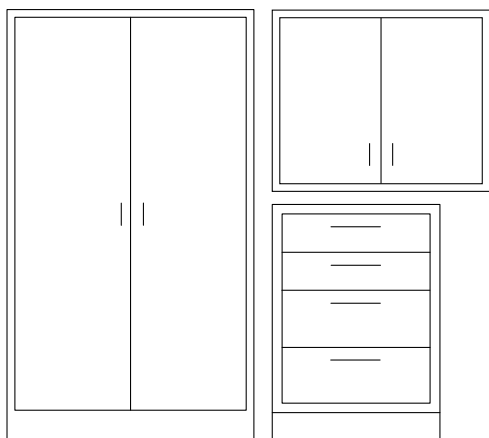
Commonly used in medical labs, research centers as well as higher ed facilities, plastic laminate casework is ideal for environments in which flexibility is desired. It is durable, versatile and one of the the most cost-efficient cabinet options available.

FEATURES

- + High quality laminate finish
- + 3MM edge for impact resistance
- + Lightweight + flexible
- + Available in 250+ colors

CASEWORK

// BASE CABINETS / WALL CASES / TALL STORAGE



FEATURES

- + Solid oak, heavy steel or plastic laminate construction
- + Epoxy or phenolic resin worktop
- + Standard without locks
- + Shelves adjustable in half-inch increments
- + All cabinets include cutout for service access
- + Full extension drawer slides
- + Horizontal or vertical metal wire pulls
- + Five-knuckle hinges standard

METAL COLORS



PETAL WHITE | LIGHT ALMOND | CHAMPAGNE | OFF WHITE | MODEL GRAY
 BLACK | BANKER'S GRAY | PEWTER | HUNTER GREEN | STONE GRAY
 FAWN BEIGE | MEDIUM BLUE | WEDGEWOOD BLUE | BURGUNDY

WOOD FINISHES



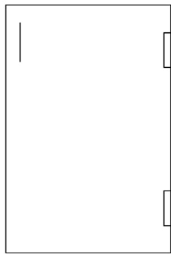
NATURAL OAK | CINNAMON TOAST | FALL HARVEST | GINGER | NORTHERN OAK

PLASTIC LAMINATE COLORS

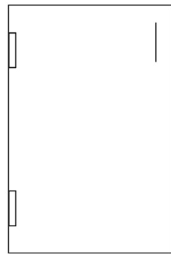


WALLABY | PORT | ORANGE GROVE | ISLAND | OCEAN
 LAPIS BLUE | ATLANTIS | NORTH SEA | SLATE GREY | BLACK
 CARTER OAK | ZEBRA WOOD | LIGHT OAK PLY | NATURAL RIFT | PORTICO TEAK
 HUNTINGTON MAPLE | NATURAL PEAR | NEPAL TEAK | RIO | WILD CHERRY

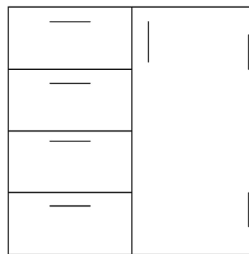
CONFIGURATIONS



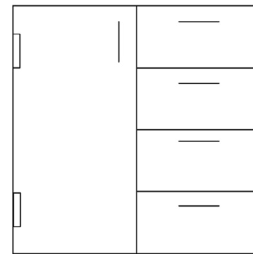
RH RIGHT-HINGED



LH LEFT-HINGED



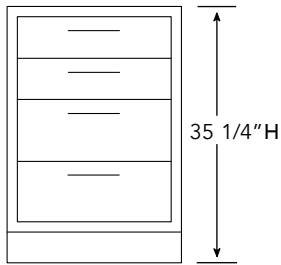
RC RIGHT CABINET



LC LEFT CABINET

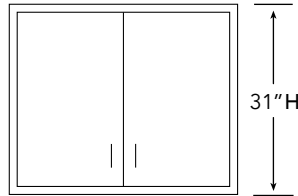
DIMENSIONS

BASE CABINETS



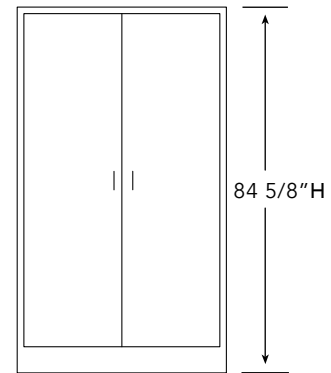
D 21 5/8" // W 18" / 24 / 36 / 48

WALL CASES



D 13" // W 36" / 48

TALL STORAGE



D 22" // W 36" / 48

DETAILS



+ CORROSION RESISTANT, POWDER COATED FINISH

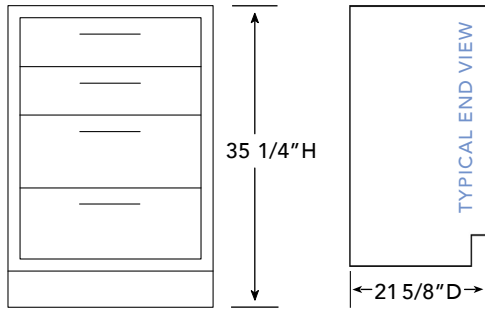


+ CHEMICAL RESISTANT, UV FINISH



+ 3MM IMPACT RESISTANT EDGE

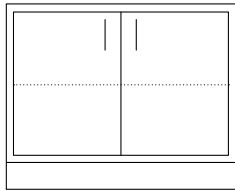
BASE CABINETS // 35 1/4"H X 21 5/8"D



FEATURES

- Typical cabinet depth 21 5/8"
- Standard without locks
- Shelves adjustable in half-inch increments
- All cabinets include cutout for service access
- Full extension drawer slides
- Metal wire pulls / five-knuckle hinges standard
- Work surfaces sold separately

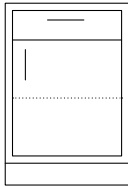
DOUBLE DOOR CABINETS



Solid hinged double doors
1 - adjustable shelf

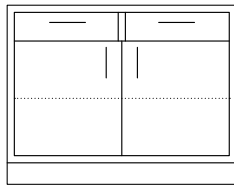
PRODUCT NUMBER	WIDTH
QS10656320	36"
QS10658320	48"

DOOR/DRAWER CABINETS



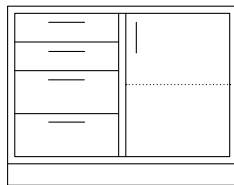
1 - 6" high drawer above cabinet
1 - adjustable shelf in cabinet

PRODUCT NUMBER	WIDTH
RH QS13652320	18"
LH QS13752320	18"



2 - 6" high drawers above cabinet
1 - adjustable shelf in cabinet

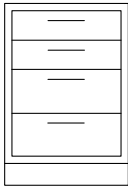
PRODUCT NUMBER	WIDTH
QS14856320	36"
QS14858320	48"



2 - 4 1/2" high drawers above
2 - 7 3/8" high drawers at left / cabinet at right
1 - adjustable shelf in cabinet

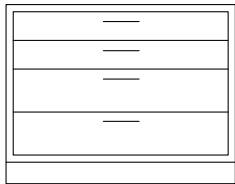
PRODUCT NUMBER	WIDTH
RC QS18056320	36"
RC QS18058320	48"
LC QS18156320	36"
LC QS18158320	48"

DRAWER CABINETS



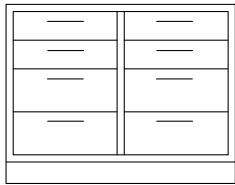
2 - 6" high drawers
2 - 9" high drawers

PRODUCT NUMBER	WIDTH
QS164S4320	24"



2 - 6" high drawers
2 - 9" high drawers

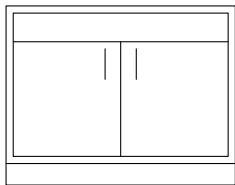
PRODUCT NUMBER	WIDTH
QS164S8320	48"



4 - 6" high drawers
4 - 9" high drawers

PRODUCT NUMBER	WIDTH
QS209S6320	36"
QS209S8320	48"

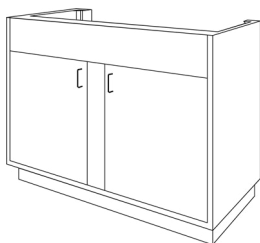
DOUBLE DOOR SINK CABINETS



Solid hinged doors
Back has cutout for large sinks
Sink supports are not included

PRODUCT NUMBER	WIDTH
QS115S6320	36"
QS115S8320	48"

DOUBLE DOOR END SINK CABINETS

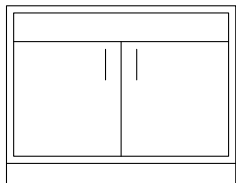


Flush front panel above solid hinged doors
Toespace at front and sides
Back has cutout for large sinks
Sink supports are not included

PRODUCT NUMBER	WIDTH
QS116S7320	52"
QS118S9320	58"

BASE CABINETS // 31" H X 13" D

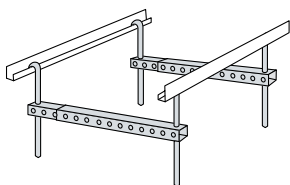
FUME HOOD BASE CABINETS



Flush front panel above solid hinged doors
Does not include shelf

PRODUCT NUMBER	WIDTH
QS12156320	36"
QS12158320	48"

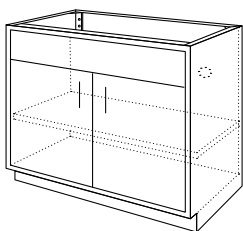
SINK SUPPORTS



Sink supports + hanger brackets for installation of an epoxy resin sink in a corner base cabinet

PRODUCT NUMBER	WIDTH
QS52L73400	36"
QS52L73600	48"
QS52L73700	52"
QS52L73800	58"

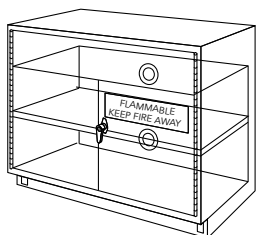
ACID STORAGE BASE CABINETS



Flush front top panel
Chemical resistant 3.16" thick molded polyethylene lining with covered corners
2" lip at front cabinet opening
Doors are lined with 1/8" thick polyethylene
2 vent holes in cabinet back
Removable back panel
1 half-depth shelf

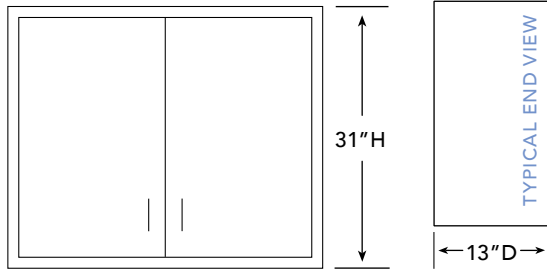
PRODUCT NUMBER	WIDTH
QS950S2280	30"
QS950S2380	36"
QS950S2400	48"

SOLVENT STORAGE BASE CABINETS



For storage of flammable/combustible materials
Self-closing locking double doors
1 - adjustable shelf // no pull option
2 - 2" pipe threaded vent outlets
Bungs plugs on back
Warning label is included
22" cabinet depth
Factory Mutual Approved // UL Listed
NFPA Standard and OSHA Regulation compliant

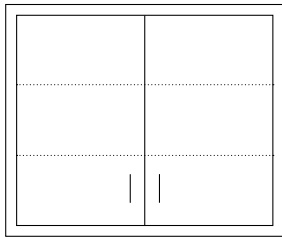
PRODUCT NUMBER	WIDTH
QS950S7781	30"
QS950S7791	36"
QS950S7811	48"



FEATURES

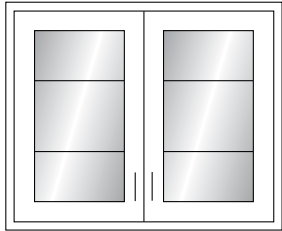
- Standard depth 13"
- Soffit bottoms included
- Standard without locks
- 2 shelves included // adjustable in 1/2" increments
- Cases have integral finished backs and fixed hanger rails
- Wall hanger cleats sold separately
- Glass thickness 7/32" on cases with glass doors

SOLID HINGED DOUBLE DOORS



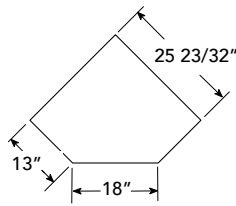
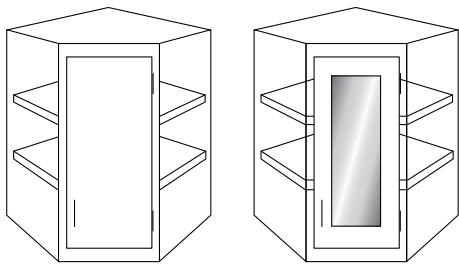
PRODUCT NUMBER	WIDTH
QS706S6330	36"
QS706S8330	48"

FRAMED GLASS HINGED DOUBLE DOORS



PRODUCT NUMBER	WIDTH
QS712S6330	36"
QS712S8330	48"

CORNER WALL CASES

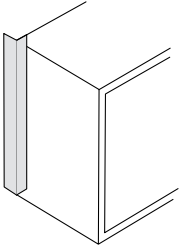


13"D CORNER WALL CASE

PRODUCT NUMBER	STYLE
RH QS723M2330	Solid
RH QS712S8330	Framed Glass

WALL CASES // 31"H X 13"D

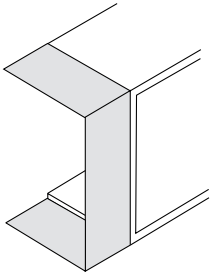
REAR SCRIBE



For use on exposed ends to conceal hanger rails
 Can be cut to size in the field
 Includes concealed clips for attaching to wall case

PRODUCT NUMBER	WIDTH
QS618S0360	1 3/8"

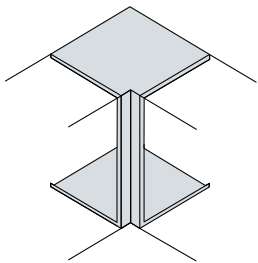
END SCRIBE



To close space at end of wall case adjacent to wall
 Can be cut to size in the field
 Includes concealed clips for attaching to wall case

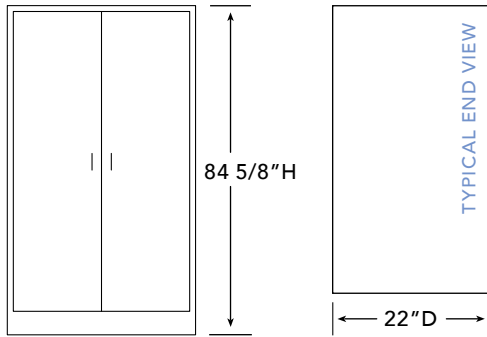
PRODUCT NUMBER	WIDTH
QS601M2330	1"
QS601M6330	6"

FILLER FOR WALL CASES



Corner filler
 For wall cases joined at a right angle

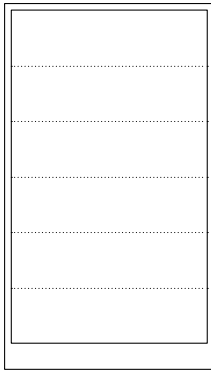
PRODUCT NUMBER	WIDTH
QS608M2330	2" X 2"



FEATURES

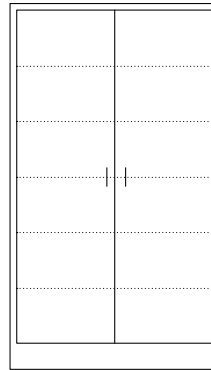
- Standard depth 21 5/8"
- 85 1/2" min. height required from finished floor to soffit
- Standard without locks
- 5 shelves included // adjustable in 1/2" increments
- Glass thickness 7/32" on cases with glass doors

OPEN FRONT CASES



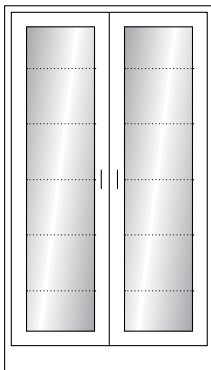
PRODUCT NUMBER	WIDTH
QS800S6920	36"
QS800S8920	48"

SOLID HINGED DOUBLE DOORS



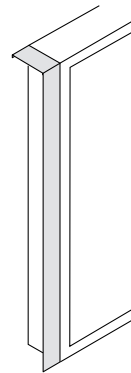
PRODUCT NUMBER	WIDTH
QS806S6920	36"
QS806S8920	48"

FRAMED GLASS HINGED DOUBLE DOORS



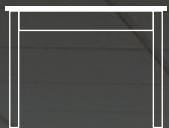
PRODUCT NUMBER	WIDTH
QS812S6920	36"
QS812S8920	48"

FILLER FOR TALL CASES



PRODUCT NUMBER	WIDTH
QS605S2920	1"
QS605S6920	6"

- To close space at end of case adjacent to wall
- Can be used on right or left side of tall case
- Can be cut to size in the field
- Includes concealed clips for attaching to case



LAB TABLES //

FRAME CONSTRUCTION

METAL
WOOD

STYLE OPTIONS

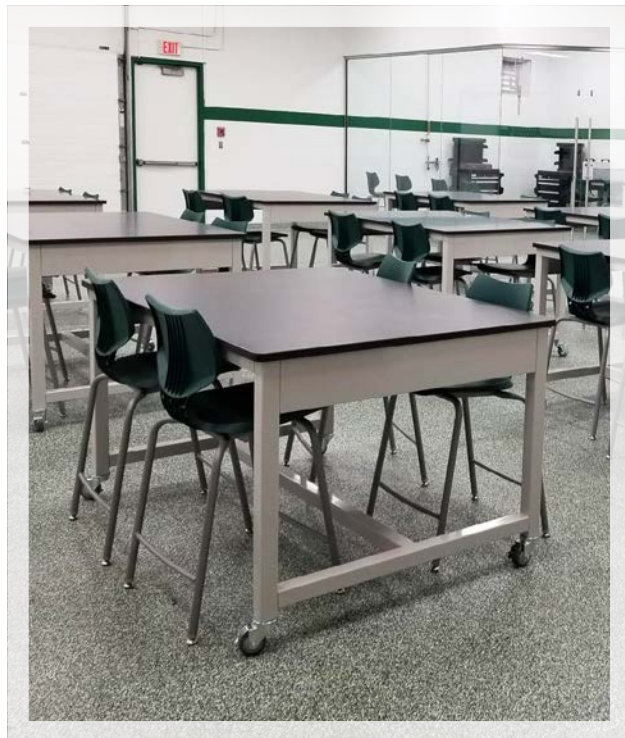
FIXED OR MOBILE BASE

HEIGHT ADJUSTABLE

DRAWER + CABINET
STORAGE

REAGENT RACKS

UPRIGHTS + SHELVING



METAL TABLES

Adaptable to the requirements of any commercial, industrial or educational lab type, our dynamic metal table series has a welded steel frame with optional casters and variable service supply modules for the integration of all services.

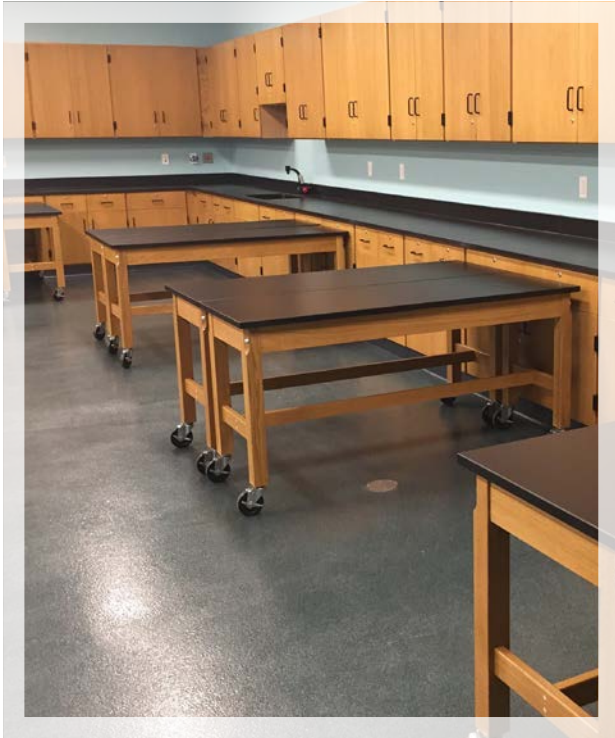


STEEL FRAME

HEIGHT ADJUSTABLE

+ POWDER-COAT, STEEL FINISH

/// LABORATORY PRODUCTS FOR ALL MARKETS,
ANY SIZE ROOM, AND EVERY BUDGET.



WOOD TABLES

Our wood-legged tables are a sturdy, durable option for a variety of educational applications. The solid wood apron is attached using heavy-duty 13-gauge steel corner braces. Choose either fixed or mobile, based on your specific laboratory requirements.



+ CHEMICAL RESISTANT, UV FINISH



MOBILE CARTS

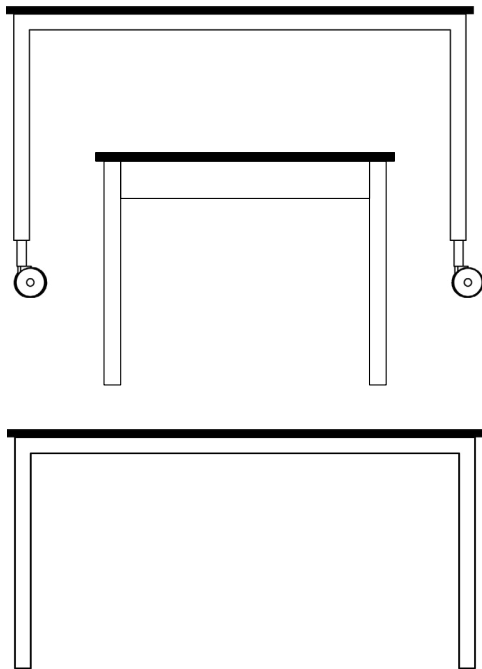
Flexibly designed and carefully constructed to provide a sustainable, streamlined solution for today's modern lab, our mobile carts are the perfect workstation solution for any lab environment where flexibility is desired.



+ POWDER-COAT, STEEL FINISH

LAB TABLES

// SYSTEMS / COMPONENTS / ACCESSORIES

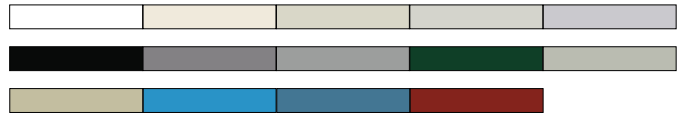


FEATURES

METAL FRAME

- + 16" or 18" gauge steel frame construction
- + Work surface in epoxy or phenolic resin
- + Powder coated steel finish
- + Casters / adjustable height legs optional
- + Metal wire pulls standard

COLORS



PETAL WHITE | LIGHT ALMOND | CHAMPAGNE | OFF WHITE | MODEL GRAY
 BLACK | BANKER'S GRAY | PEWTER | HUNTER GREEN | STONE GRAY
 FAWN BEIGE | MEDIUM BLUE | WEDGEWOOD BLUE | BURGUNDY

WOOD FRAME

- + Solid wood frame construction
- + Chemical resistant, UV finish
- + Work surface in epoxy or phenolic resin
- + Available in 5+ finishes
- + Metal wire pulls standard

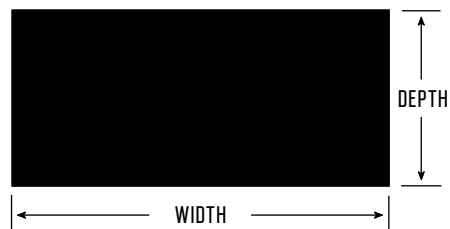
FINISHES



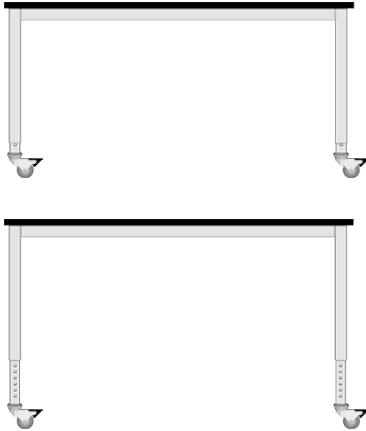
NATURAL OAK | CINNAMON TOAST | FALL HARVEST | GINGER | NORTHERN OAK

STANDARD DIMENSIONS

D 24" / 30" // W 36" / 48" / 60" / 72"



FLEX METAL TABLE SYSTEM

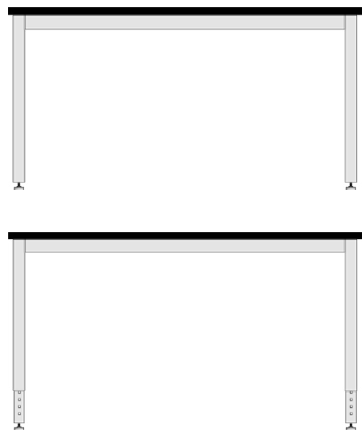


Height adjustable // 30-36"
 Fixed style or mobile base
 4" heavy duty locking casters optional
 Service supply modules available for easy access to h/c water, gas, electricity & data
 Under-bench storage options // drawer, cupboard or combination storage
 Adjustable reagent shelving add-ons

PRODUCT NUMBER	TABLETOP
QSKY2424	24"D X 24"W
QSKY2430	24"D X 30"W
QSKY2436	24"D X 36"W
QSKY2448	24"D X 48"W
QSKY2460	24"D X 60"W
QSKY2472	24"D X 72"W
QSKY2496	24"D X 96"W
// FOR HEIGHT ADJUSTABLE FLEX	

ALSO AVAILABLE D 30"/ 36"/ 48"

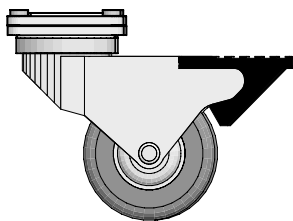
CLASSIC METAL / HEIGHT ADJUSTABLE TABLE



Painted steel frame construction
 Adjustable height legs // minimal tools required for readjustment
 Weight capacity of table // w/ levelers 600 lb. // w/ casters 300 lb.

PRODUCT NUMBER	TABLETOP
QS950H3600	27 7/8"D X 36"W
QS950H3020	27 7/8"D X 48"W
QS950H3030	27 7/8"D X 60"W
QS950H3040	27 7/8"D X 72"W
// FOR CLASSIC W/ LEVELERS	

LEVELING CASTER KIT



Set of 4 lockable casters
 Impact resistant black rubber wheels
 Mount height 3 9/16"H

PRODUCT NUMBER	HEIGHT
QS950H3200BLK	3 9/16"

STANDARD LABORATORY TABLE / WOOD OR METAL FRAME

// SPECIFY WOOD OR METAL



Metal wire pulls standard
 Assembly required
 Weight capacity approx. 600 lbs



RAIL / DRAWER COMPONENTS



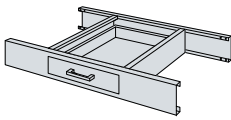
Kneespace rail

Use rails/ frames with drawers to support work surfaces suspended between two base cabinets, cabinet and wall or w/ leg assemblies

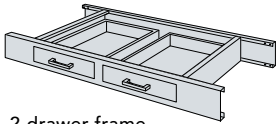
Rails ordered in pairs for front and back support

Rail / frame height 4 1/2"

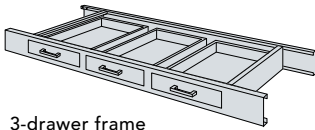
Metal wire pulls standard



1-drawer frame



2-drawer frame



3-drawer frame

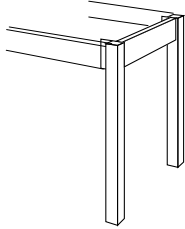
PRODUCT NUMBER	TABLETOP	NO. OF DRAWERS
QS950S330	24"D X 36"W	1
QS950S334	24"D X 48"W	2
QS950S338	24"D X 60"W	2
QS950S342	24"D X 72"W	3
QS950S331	30"D X 36"W	1
QS950S335	30"D X 48"W	2
QS950S339	30"D X 60"W	2
QS950S343	30"D X 72"W	3

// FOR TABLES 30"H

PRODUCT NUMBER	TABLETOP	NO. OF DRAWERS
QS950S380	24"D X 36"W	1
QS950S384	24"D X 48"W	2
QS950S388	24"D X 60"W	2
QS950S392	24"D X 72"W	3
QS950S381	30"D X 36"W	1
QS950S385	30"D X 48"W	2
QS950S389	30"D X 60"W	2
QS950S393	30"D X 72"W	3

// FOR TABLES 36"H

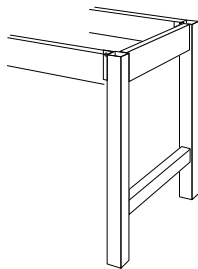
END LEG ASSEMBLY



Double leg assembly with adjustable leveler glides and vinyl leg shoes to provide support at either end of a table frame
Attachment hardware included

PRODUCT NUMBER	LEG ASSEMBLY
QS522S3010	21 5/8"D X 29"H
QS522S3610	21 5/8"D X 35"H
QS522S3020	28"D X 29"H
QS522S3620	28"D X 35"H

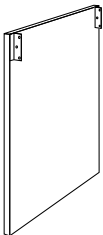
END LEG ASSEMBLY W/ RAIL



Double leg assembly with adjustable leveler glides and vinyl leg shoes to provide support at either end of table frame
Includes crossmember for added rigidity/ must be field attached
Attachment hardware is included

PRODUCT NUMBER	LEG ASSEMBLY
QS522S4010	21 5/8"D X 29"H
QS522S4610	21 5/8"D X 35"H
QS522S4020	28"D X 29"H
QS522S4620	28"D X 35"H

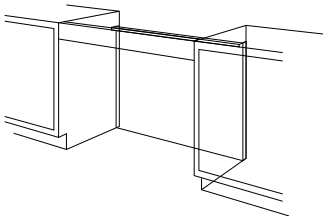
PANEL END SUPPORT



Use in place of legs on one end to support drawer frame
Angles are bolted to panel for easy removal
Attachment hardware is included

PRODUCT NUMBER	PANEL
QS525S3020	22"D X 29"H
QS525S3620	22"D X 35"H
QS525S3080	28"D X 29"H
QS525S3680	28"D X 35"H

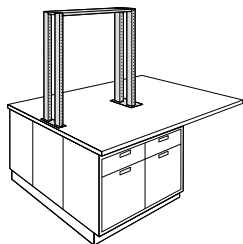
KNEESPACE PANEL



Use at rear of kneespace to provide physical/ visual barrier

PRODUCT NUMBER	PANEL
QS616S5220	30"H X 30"W
QS616S6220	30"H X 36"W
QS616S8220	30"H X 48"W
QS616S5320	36"H X 30"W
QS616S6320	36"H X 36"W
QS616S8320	36"H X 48"W
// WORK SURFACE HEIGHT X PANEL WIDTH	

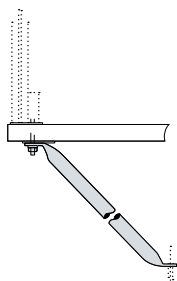
ISLAND MOUNTED BENCH-TOP UPRIGHTS



49"H x 12"D
 Fasten to new or existing work surface
 Installation requires drilling holes in work surface
 Provides up to five feet of storage at a single level
 Components adjustable in 1" increments
 Weight capacity: 1,080 lbs.
 Ideal for instrumentation

PRODUCT NUMBER	LENGTH
QS436H6920	36"
QS436H8920	48"

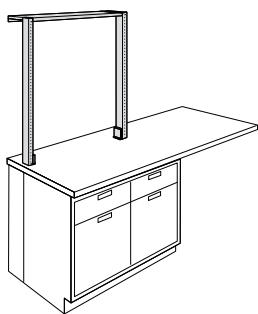
BENCH-TOP BRACE KIT



Brace kit for work surface mount bench-top uprights
 Install below work surface
 One brace kit required per island assembly

PRODUCT NUMBER
QS901H2200

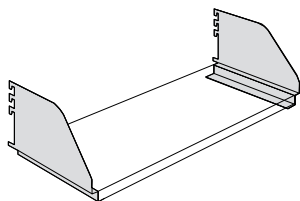
WALL MOUNTED BENCH-TOP UPRIGHTS



Fasten to new or existing work surface
 49"H x 8 3/4"D
 All mounting hardware provided

PRODUCT NUMBER	LENGTH
QS436H6980	36"
QS436H8980	48"

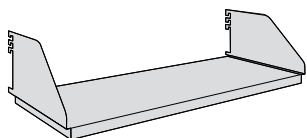
OUTER SHELF END BRACKETS



Pair of steel end brackets designed to fit most types of outer shelves
 Can be cantilevered from any MAX/Lab structural support structure

PRODUCT NUMBER
QS925H0120

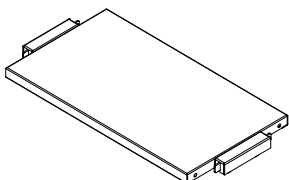
OUTER SHELF



Shelf is adjustable in 1" increments over entire height of support structure
 Suitable for any MAX/Lab support structure
 Optional lip may be ordered

PRODUCT NUMBER	LENGTH
QS914H1236	36"
QS914H1248	48"
// OUTER SHELF 12"W	

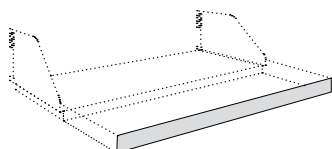
INNER SHELF



Adjustable shelf hung on inside of island core upper frames
 Includes two oval cable pass-throughs w/ rubber U-channel to prevent catching or crimping cables
 12"D
 Manually adjustable in 1" increments throughout entire height of support structure

PRODUCT NUMBER	LENGTH
QS919H1236	36"
QS919H1248	48"
// INNER SHELF 12"W	

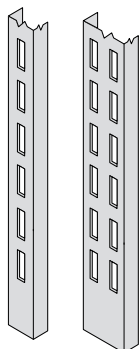
SHELF LIP



Steel lip extends 1/2" above shelf surface
 Add to any inner/ outer shelf, front, back or both edges

PRODUCT NUMBER	LENGTH
QS911H9361	36"
QS911H9481	48"

VERTICAL RAILS



For above-counter system
 36"H
 Specify 2 single-slotted + 1 double-slotted vertical rail for each wall rail system

PRODUCT NUMBER	STYLE
QS483H9030	Single-slotted
QS483H9040	Double-slotted



FEATURES

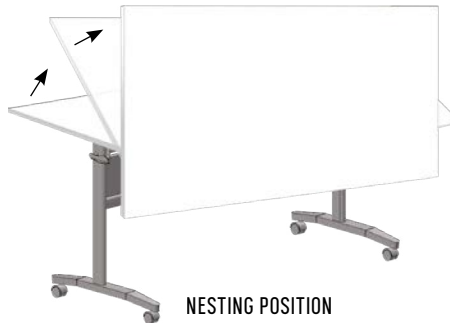
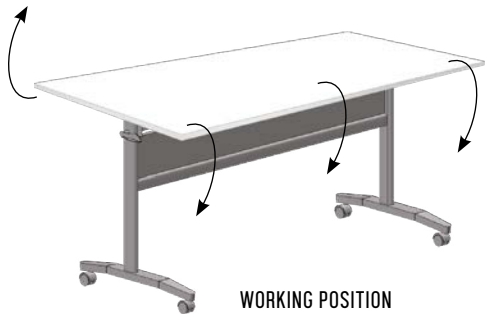
- Worktop depths from 24 - 30"D
- Worktop widths from 60 - 72"W
- Powder coated steel frame w/ Alumina finish
- Worktop in white or black
- Top flips vertically for table nesting/ easy storage
- 60mm locking casters
- Steel modesty panel included

MOBILE FLIP/ NESTING TABLE



PRODUCT NUMBER	WIDTH	DEPTH	HEIGHT
QSTNB	60-72"W	24-30"D	27-34"H
// ADD -TNGANG FOR GANGING BRACKETS TO CONNECT MULTIPLE TABLES			

// Worktop lifts upward to vertical nesting position





FEATURES

- Grey powder coated steel frame
- 1-1/8" thick top in black, high pressure laminate
- Heavy duty locking casters
- Inset steel frame w/ 6" inset each side or flush frame design
- Interchangeable services for gas, electric + water supply
- Under-bench drawer, cupboard or combination storage
- Adjustable upper shelving w/ optional LED task lighting

ENCLOSED INSTRUMENT BENCH W/ FLUSH FRAME



- Powder coat steel frame
- 5" heavy duty locking casters
- Work surface depth // 34"D
- Durable high pressure laminate top
- Weight capacity 1200 lbs.
- Electrical + data cable management for concealment and organization
- Cutouts for hoses/ cables optional

PRODUCT NUMBER	WIDTH	HEIGHT
OL2IT36E-FSF	36"W	37"H
OL2IT42E-FSF	42"W	37"H
OL2IT48E-FSF	48"W	37"H
OL2IT54E-FSF	54"W	37"H
OL2IT60E-FSF	60"W	37"H
OL2IT66E-FSF	66"W	37"H
OL2IT72E-FSF	72"W	37"H
OL2IT84E-FSF	84"W	37"H
OL2IT96E-FSF	96"W	37"H

OPEN INSTRUMENT BENCH W/ FLUSH FRAME



- Welded 16-gauge steel frame w/ powder coat finish + laminate panels
- Inset steel frame w/ 6" inset each side or flush frame design
- 5" heavy-duty locking casters
- Work surface depth // 34"D
- Durable high pressure laminate top
- Weight capacity 1200 lbs.
- Electrical + data cable management for concealment and organization
- Cutouts for hoses/ cables optional

PRODUCT NUMBER	WIDTH	HEIGHT
OL2IT36-FSF	36"W	37"H
OL2IT42-FSF	42"W	37"H
OL2IT48-FSF	48"W	37"H
OL2IT54-FSF	54"W	37"H
OL2IT60-FSF	60"W	37"H
OL2IT66-FSF	66"W	37"H
OL2IT72-FSF	72"W	37"H
OL2IT84-FSF	84"W	37"H
OL2IT96-FSF	96"W	37"H



FUME HOODS //

BASE CABINET OPTIONS

STEEL

WOOD

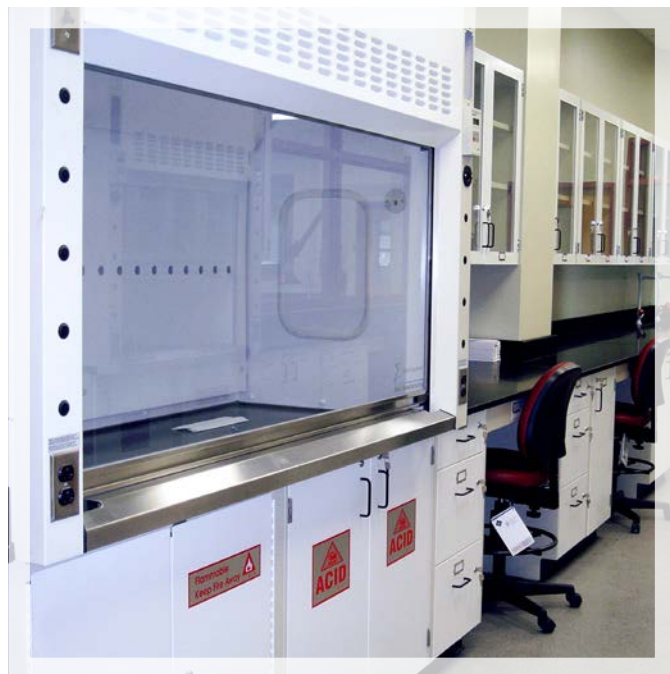
STORAGE TYPE

GENERAL

ACID STORAGE

SOLVENT STORAGE

VACUUM PUMP



/// LABORATORY PRODUCTS FOR ALL MARKETS, ANY SIZE ROOM, AND EVERY BUDGET.

FUME HOOD BASICS

IS YOUR FUME HOOD OPERATING PROPERLY?

A fume hood is one of the most important pieces of safety equipment in a laboratory. It must absolutely function properly for the applications being performed because the primary purpose of a fume hood is to provide protection. When appropriately selected for the application, a fume hood should protect the following things//

1. the user from inhaling toxic gases
2. the product or experiment
3. the environment

THOUGHTS BEFORE BUYING

HAVE YOU CONSIDERED THE FOLLOWING?

What materials are you working with?

Are you using the correct fume hood for the applications being performed?

What type of hood are you looking for?

How many hoods do you need?

What size hood are you looking for?

Do you need a cup sink?

Do you need services such as gas, air or nitrogen?

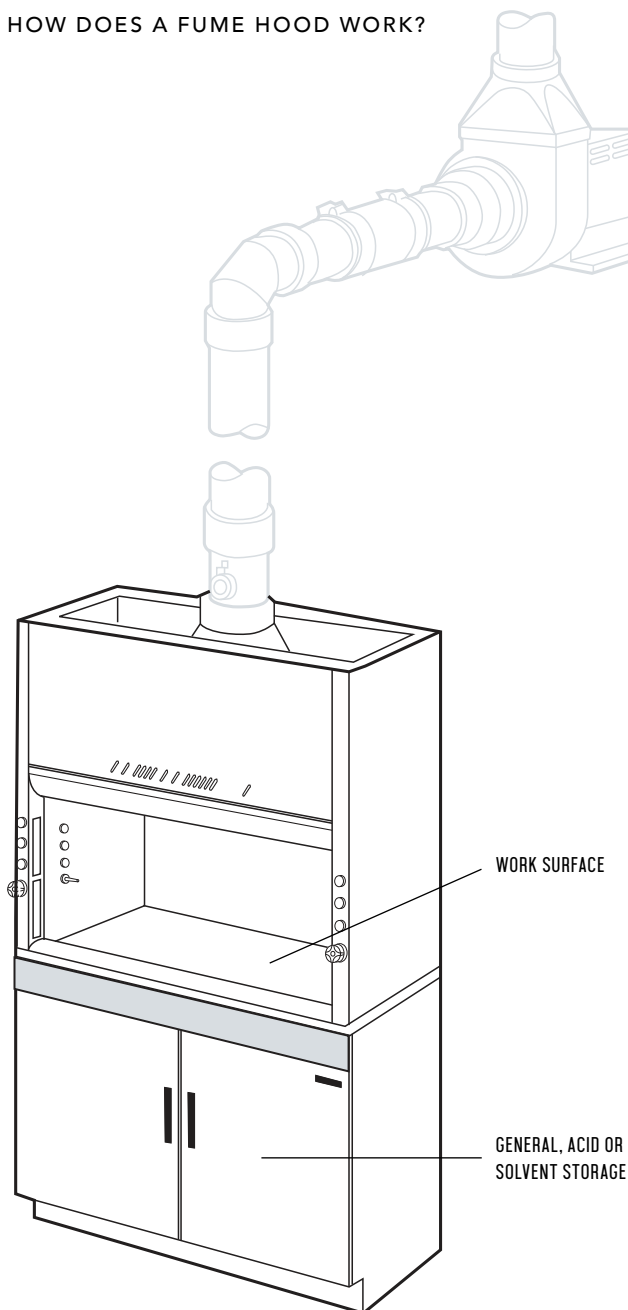
Do you need base cabinets for storage?

Do you have an existing fan system on site?

Is your building HVAC system balanced to compensate for proper fume hood operation?

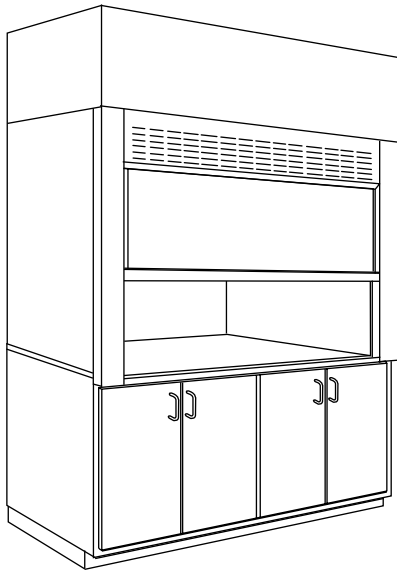
THE COMPONENTS

HOW DOES A FUME HOOD WORK?



FUME HOODS

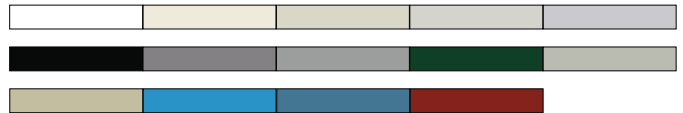
// AIR FOIL



FEATURES

- + 45-degree angle around fascia
- + Minimized turbulence + increased performance
- + Chemical-resistant, powder coat finish
- + Flush-mount radiused airfoil 16-gauge rolled steel
- + 5"W posts / 10" round s/s duct collar
- + T-8 fluorescent light with bulbs
- + Full frame construction + knock down capability
- + Shaft drive sash
- + U.L. Listed poly resin liner
- + Full-length finger lift
- + Louvered front for by-pass
- + U.L.1805 Classified

FUME HOODS / STEEL BASE CABINETS



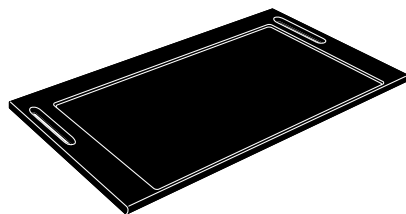
PETAL WHITE | LIGHT ALMOND | CHAMPAGNE | OFF WHITE | MODEL GRAY
 BLACK | BANKER'S GRAY | PEWTER | HUNTER GREEN | STONE GRAY
 FAWN BEIGE | MEDIUM BLUE | WEDGEWOOD BLUE | BURGUNDY

WOOD BASE CABINETS



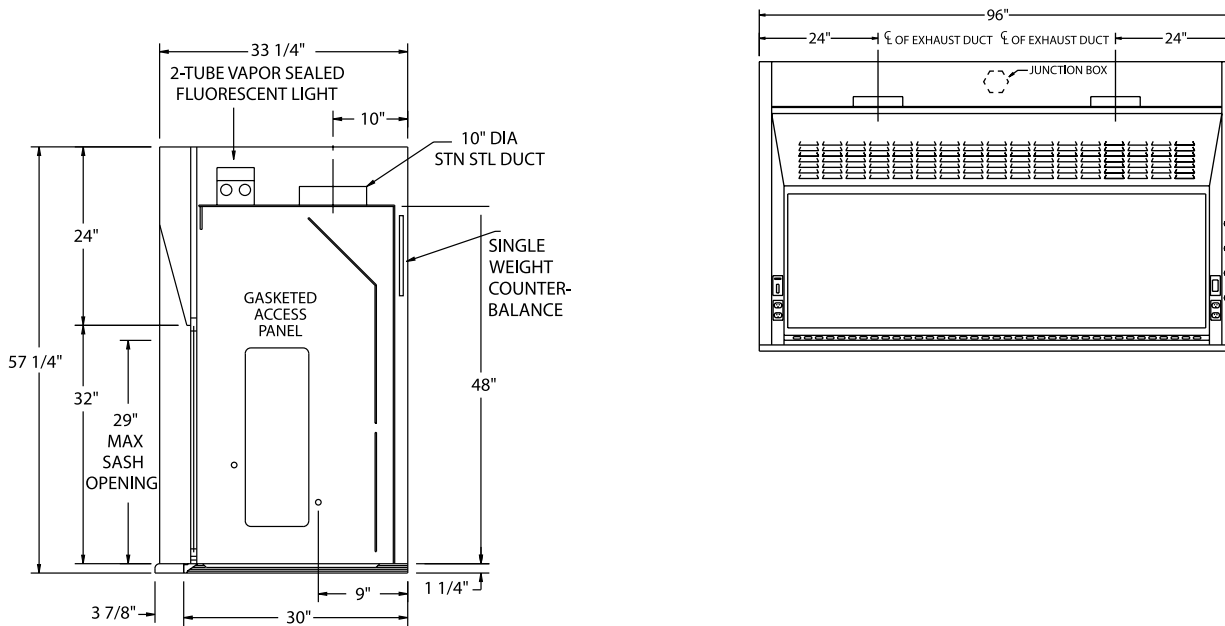
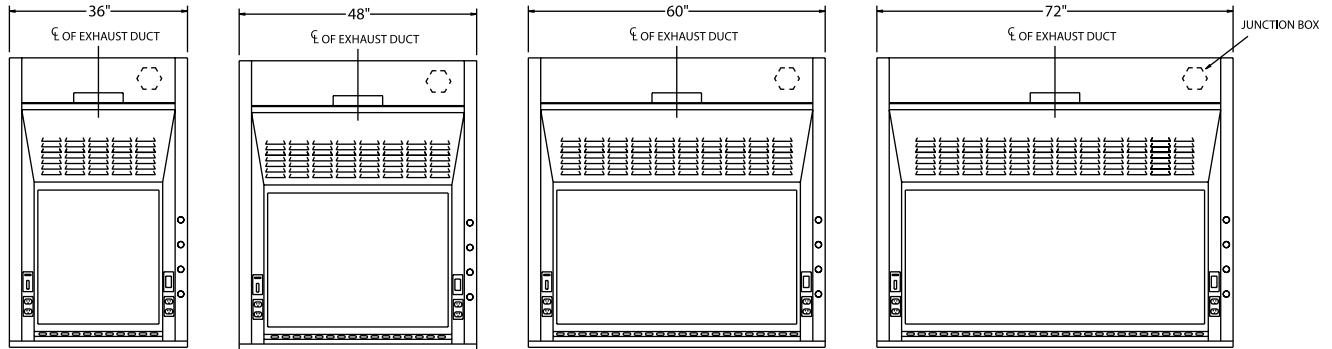
NATURAL OAK | CINNAMON TOAST | FALL HARVEST | GINGER | NORTHERN OAK

WORK SURFACES



BLACK EPOXY RESIN STANDARD // PG 31

AIR FOIL FUME HOOD

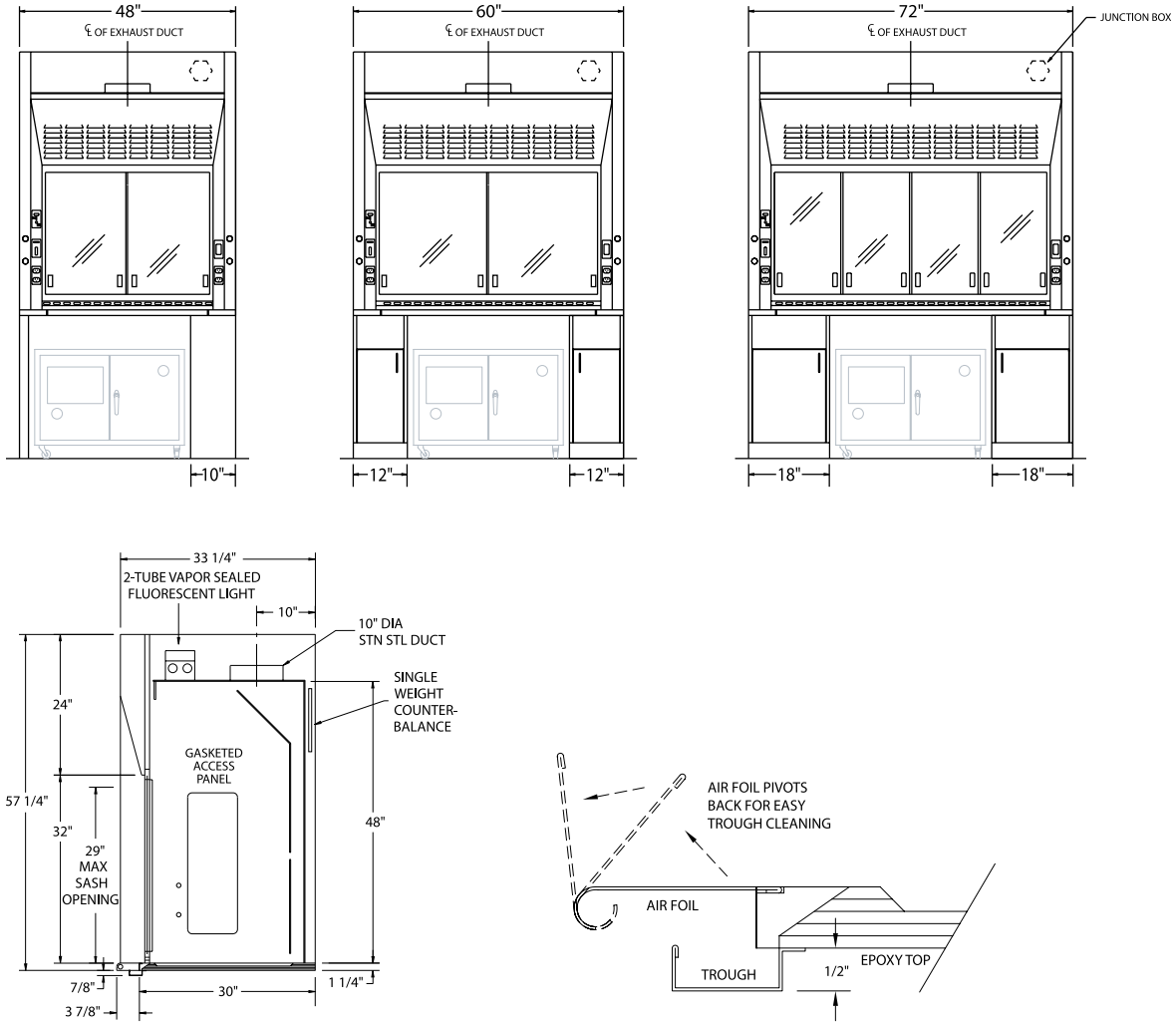


PRODUCT NUMBER	SUPERSTRUCTURE	WORKTOP	HOOD OPENING	CFM @ 29"	CFM @ 18"	SP	BLOWER MODEL
QS-111-36	36"W X 33 1/4"D	36"W X 30"D	26"W X 29"H	567	354	.25	BL-100-36
QS-111-48	48"W X 33 1/4"D	48"W X 30"D	38"W X 29"H	833	521	.25	BL-100-48
QS-111-60	60"W X 33 1/4"D	60"W X 30"D	50"W X 29"H	1100	688	.34	BL-100-60
QS-111-72	72"W X 33 1/4"D	72"W X 30"D	62"W X 29"H	1367	854	.34	BL-100-72
QS-111-96	96"W X 33 1/4"D	96"W X 30"D	86"W X 29"H	1900	1188	.40	BL-100-96

// FOR SUPERSTRUCTURE 56"H / WORKTOP 1 1/4"H

// Height of open sash / CFM calculated @ 100 FPM. For VAV hoods / Add -VAV to part number. Additional depths available.

ADA AIR FOIL FUME HOOD



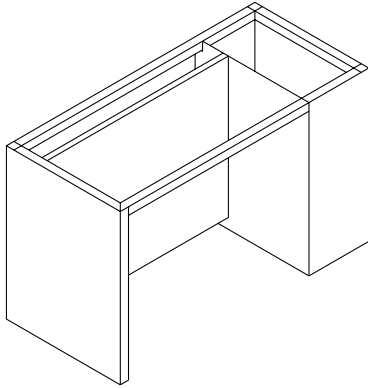
PRODUCT NUMBER	SUPERSTRUCTURE	WORKTOP	HOOD OPENING	CFM @ 29"	CFM @ 18"	SP	BLOWER MODEL
QS-511-48	48"W X 33 1/4"D	48"W X 30"D	38"W X 29"H	833	521	.25	BL-500-48
QS-511-60	60"W X 33 1/4"D	60"W X 30"D	50"W X 29"H	1100	688	.34	BL-500-60
QS-511-72	72"W X 33 1/4"D	72"W X 30"D	62"W X 29"H	13670	854	.34	BL-500-72

// FOR SUPERSTRUCTURE 56"H / WORKTOP 1 1/4"H

// Height of open sash / CFM calculated @ 100 FPM. For VAV hoods / Add -VAV to part number. Additional depths available.

ADA FUME HOOD BASE FRAMES

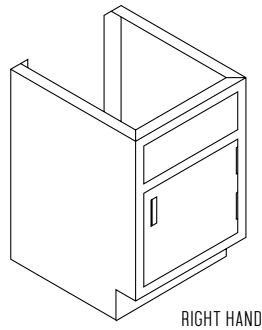
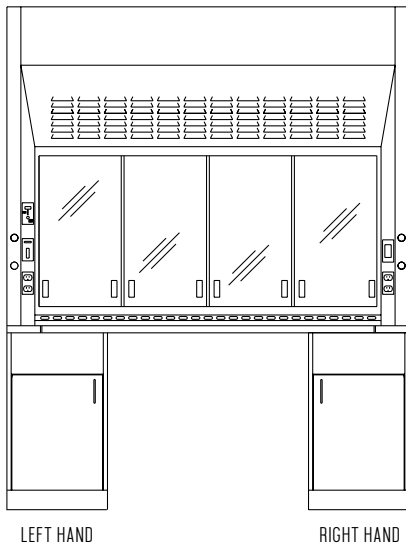
// SPECIFY WOOD OR METAL



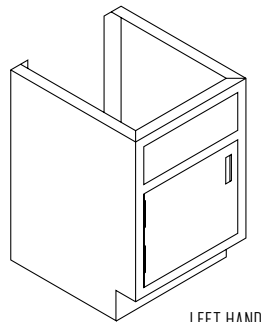
ADA Base frames + cabinets in solid wood or powder-coated steel
2 heights available // 30 or 33”H

PRODUCT NUMBER	BASE FRAME
RH HBF-3048	30”H X 48”W
RH HBF-3348	33”H X 48”W
LH HBF-3048	30”H X 48”W
LH HBF-3348	33”H X 48”W
// SPECIFY LEFT OR RIGHT HAND	

ADA FUME HOOD BASE CABINETS



RIGHT HAND

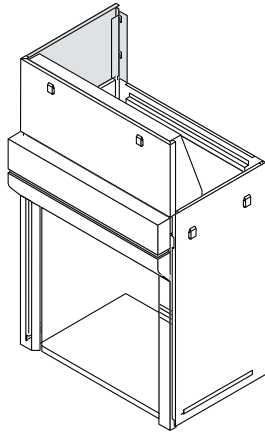


LEFT HAND

PRODUCT NUMBER	SINGLE DOOR BASE
RH B2912-10P	29”H X 12”W
RH B2918-10P	29”H X 18”W
RH B2924-10P	29”H X 24”W
RH B3312-10P	33”H X 12”W
RH B3318-10P	33”H X 18”W
RH B3324-10P	33”H X 24”W
// FOR RIGHT HAND BASE	

PRODUCT NUMBER	SINGLE DOOR BASE
LH B2912-10P	29”H X 12”W
LH B2918-10P	29”H X 18”W
LH B2924-10P	29”H X 24”W
LH B3312-10P	33”H X 12”W
LH B3318-10P	33”H X 18”W
LH B3324-10P	33”H X 24”W
// FOR LEFT HAND BASE	

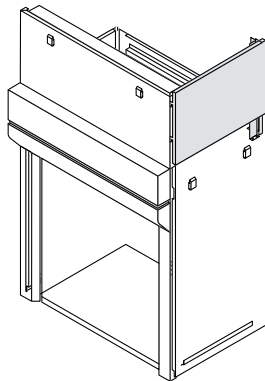
LEFT CEILING ENCLOSURE PANELS



Use to enclose space at left side of structure between lower left side panel and ceiling
Requires front ceiling and sash enclosure panels

PRODUCT NUMBER	FUME HOOD
QS54L31170LCEP	31 1/4" D X 17 1/2" H

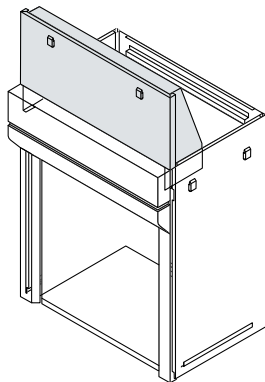
RIGHT CEILING ENCLOSURE PANELS



Use to enclose space at right side of structure between lower left side panel and ceiling
Requires front ceiling and sash enclosure panels

PRODUCT NUMBER	FUME HOOD
QS54L31170RCEP	31 1/4" D X 17 1/2" H

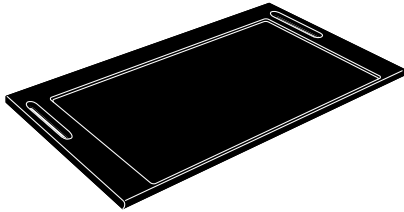
FRONT CEILING / SASH ENCLOSURE PANELS



Use to enclose space between front top and ceiling of 17 1/2" H superstructure
Provides enclosure for raised sash

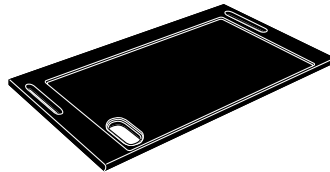
PRODUCT NUMBER	FUME HOOD WIDTH
QS54L48170FCSE	48"
QS54L60170FCSE	60"
QS54L72170FCSE	72"
QS54L96170FCSE	96"
// FOR SUPERSTRUCTURE 17 1/2" H	

EPOXY RESIN WORK SURFACE

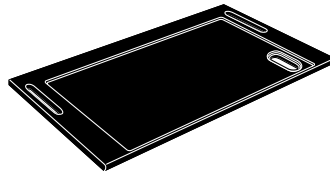


NO CUPSINK CUTOUT

Work surface for 31 1/4"D fume hood
 Black epoxy resin standard
 Requires shallow cupsink / 1-1/4" thick
 Symmetrical piping pass-through cutouts
 Cupsink ordered separately



LEFT FRONT CUPSINK CUTOUT



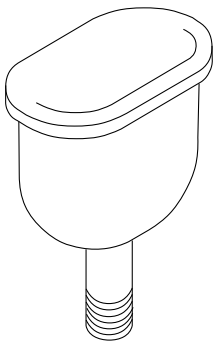
RIGHT FRONT CUPSINK CUTOUT

PRODUCT NUMBER	WIDTH
QS21L4826000	48"
QS21L6026000	60"
QS21L7226000	72"
QS21L9626000	96"
// FOR NO CUPSINK CUTOUT	

PRODUCT NUMBER	WIDTH
QS21L48261LF	48"
QS21L60261LF	60"
QS21L72261LF	72"
QS21L96261LF	96"
// FOR LEFT FRONT CUPSINK CUTOUT	

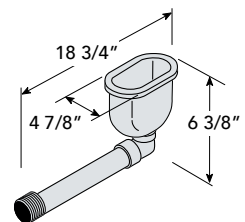
PRODUCT NUMBER	WIDTH
QS21L48261RF	48"
QS21L60261RF	60"
QS21L72261RF	72"
QS21L96261RF	96"
// FOR RIGHT FRONT CUPSINK CUTOUT	

OVAL CUPSINK



Epoxy resin cupsink
 Overall Height 8 1/8"
 Inside Dimension 6" X 3"
 Outlet 1 1/2"
 Shallow cupsink for restricted spaces
 Ideal for a fume hood installed above acid or flammable storage cabinet
 Provides for front-mounted location above acid/flammable cabinet w/ flush front

PRODUCT NUMBER	DIAMETER
QS34L13200	7 1/2" x 4 1/2"
QS34L13700	7 1/2" x 4 1/2"
// FOR CUPSINK W/ ELBOW	



LAB SEATING

// CHAIRS + STOOLS



FEATURES

- + Height adjustable base
- + Fixed or mobile base in nylon chrome or aluminum
- + Heavy duty welding / holds up to 450lb.
- + Standard 5-leg base w/ glides or 2.5" casters
- + Durable seat material / tear resistant polyurethane

SEAT

POLYURETHANE



BLACK

BASE DIMENSIONS

STYLE	WIDTH
NYLON	25"W
CHROME	26"W
ALUMINUM	27"W

BASE STYLES

MOBILE



NYLON



CHROME



ALUMINUM

FIXED



NYLON



CHROME



ALUMINUM

FLEX CHAIR / ALUMINUM BASE



Height adjustable
 Fixed style or mobile base
 Independent seat back, height + tilt pressure levers
 High-density polyurethane seat
 Weight capacity up to 450lb.
 Glides or 2.5" casters optional
 Seat / 18"D X 18.5"W // Seat Back / 12"H X 16"W

PRODUCT NUMBER	HEIGHT RANGE
QS-LAT-UA	17" to 25"H
QS-LAT-UB	22" to 32"H

FLEX CHAIR / CHROME BASE



PRODUCT NUMBER	HEIGHT RANGE
QS-LCT-UA	21" to 29"H
QS-LCT-UB	25" to 35"H

FLEX CHAIR / NYLON BASE



PRODUCT NUMBER	HEIGHT RANGE
QS-LNT-UA	18 to 26"H
QS-LNT-UB	22" to 32"H

FLEX STOOL



Height adjustable // 23-33"
 Fixed style or mobile base
 Round or tractor-style molded seat
 Weight capacity up to 450lb.
 Glides or 2.5" casters optional
 Seat / 19"W X 14"D

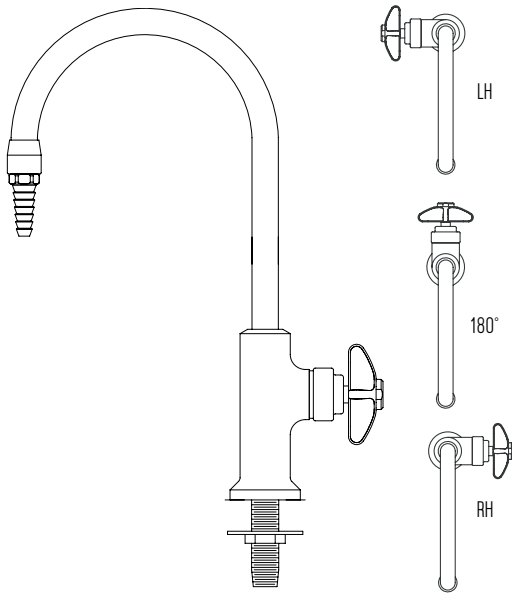
PRODUCT NUMBER	BASE	HEIGHT RANGE
QS-LNT-US	Nylon	23 to 33"
QS-LCT-US	Chrome	23 to 33"
QS-LAT-US	Aluminum	23 to 33"
// ROUND SEAT STYLE		



PRODUCT NUMBER	BASE	HEIGHT RANGE
QS-LNT-UT	Nylon	23 to 33"
QS-LCT-UT	Chrome	23 to 33"
QS-LAT-UT	Aluminum	23 to 33"
// TRACTOR SEAT STYLE		

FIXTURES

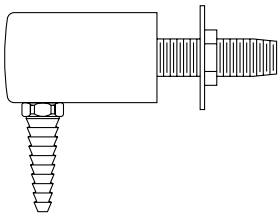
// PLUMBING + ELECTRICAL



FEATURES

- + Polished chrome plated finish on fixtures standard
- + Pure tin interior lining on fixtures
- + Remote-operated fixtures come w/ four-prong handles
- + Baked, color-coded epoxy upper assemblies
- + Control rods cut to length
- + Pre-plumbed services // 3/8" Outer Diameter
- + Pre-plumbed services // 1/4" Inner Diameter
- + Polypropylene tubing for water, air and vacuum
- + Polypropylene tubing // 1/2" Outer Diameter
- + Flexible stainless steel tubing for burning gas services

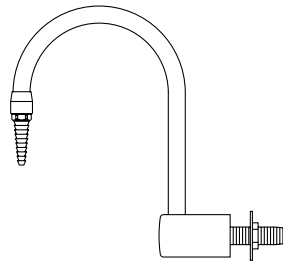
90° WATER FAUCET



PRODUCT NUMBER

QS-FXTDS

GOOSENECK FAUCET

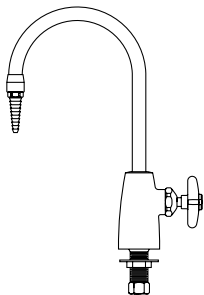


PRODUCT NUMBER

QS-FXTGN

// SPECIFY HOT OR COLD

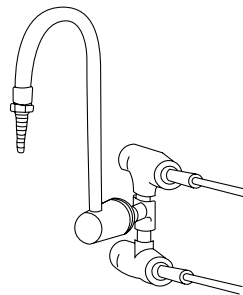
DECK MOUNT WATER



PRODUCT NUMBER

QS-FXDMW

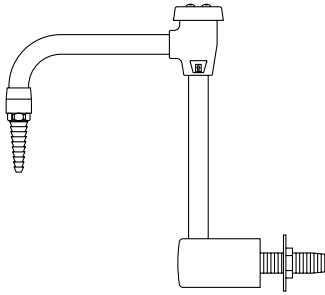
HOT + COLD WATER MIXING



PRODUCT NUMBER

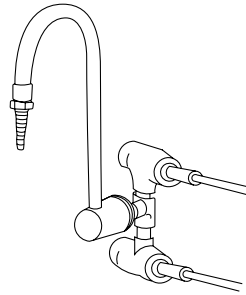
QS-FXTCWM

GOOSENECK FAUCET W/ VACUUM BREAKER



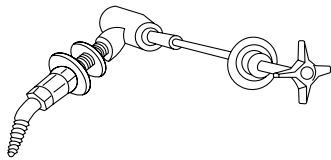
PRODUCT NUMBER
QS-FXTGNWVB
// SPECIFY HOT OR COLD

HOT + COLD WATER MIXING



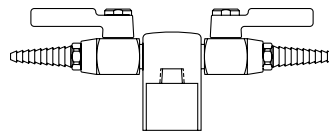
PRODUCT NUMBER
QS-FXTCWM

REMOTE CONTROL FIXTURES



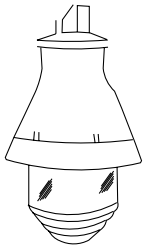
PRODUCT NUMBER
QS-FXTGNWVB
// SPECIFY HOT OR COLD

DECK MOUNT GAS DOUBLE OUTLET



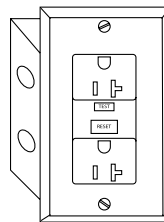
PRODUCT NUMBER
QS-FXTDMG2
// SINGLE ALSO AVAILABLE

EXPLOSION PROOF LIGHT



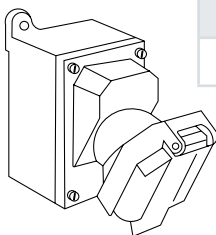
PRODUCT NUMBER	TYPE
QS-XPL	Class 1 / Group 1
// INCANDESCENT OR FLUORESCENT	

GROUND FAULT INTERRUPTER DUPLEX



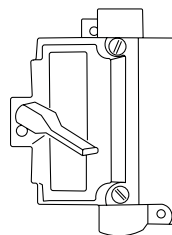
PRODUCT NUMBER	TYPE
QS-GFI	120 Volt / 20 Amp
// STANDARD BLACK OUTLET W/ COVER	

EXPLOSION PROOF OUTLET



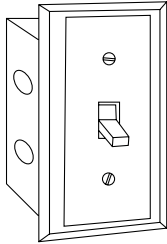
PRODUCT NUMBER	TYPE
QS-XPO	Class 1 / Group 1

EXPLOSION PROOF SWITCH



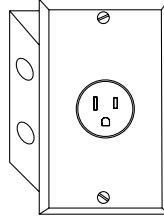
PRODUCT NUMBER	TYPE
QS-XSW	Class 1 / Group 1

RED ILLUMINATED TOGGLE SWITCH



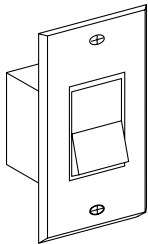
PRODUCT NUMBER
QS-BLSW
// STANDARD BLACK W/ COVER PLATE

SINGLE POLE RECEPTACLE / 230, 277



PRODUCT NUMBER	TYPE
QS-208	208 Volt / 20 Amp
// OTHER AVAILABLE UPON REQUEST	

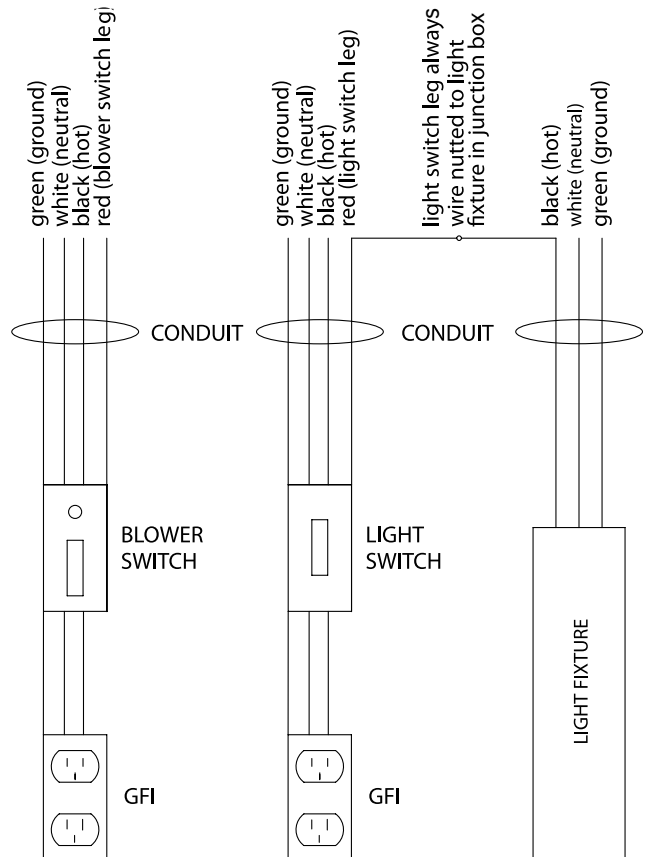
SINGLE POLE SWITCH



PRODUCT NUMBER	TYPE
QS-LTSW	15 Amp
// STANDARD BLACK W/ COVER PLATE	

NOTE // If a fume hood is not pre-wired, wiring in the field must be performed using U.L. listed electrical fixtures while observing NEC standards and local electrical codes. Pre-wire service is completed in accordance with NEC and U.L. 1805 standards.

PRODUCT NUMBER	TYPE
FXTGAS	Gas
FXTAIR	Air
FXTVAC	Vacuum
FXTNIT	Nitrogen
FXTCW	Cold Water
// OTHER AVAILABLE UPON REQUEST	



L A B S C A P E



CONTACT US



info@labscape.com



800.898.664

VISIT US ONLINE



www.labscape.com

TO SEE OUR FULL RANGE OF LABORATORY PRODUCTS or LEARN MORE ABOUT OUR QUICKSHIP PROGRAM CALL or VISIT US ONLINE.
ALL PRODUCTS + SERVICES ARE AVAILABLE FOR PURCHASE THROUGH THE FOLLOWING PURCHASING COOPERATIVES.

